

2 Fuel and ignition system

Special model “40 years 911”

General

The engine of the special model “40 years 911” is an increased power version based on the 911 Carrera 3.6 liter.

In this chapter, only the changes deviating from the standard engine are described.

This vehicle is only available with manual gearbox.

Summary of engine modifications:

- Modified map for the ME 7.8 Motronic control unit (DME)
- Intake air manifold in sand-cast aluminum with modified cross section
- Adapted intake manifold pipes
- Sucking jet pump on manual gearbox
- Exhaust manifold with larger cross section and optimized flow characteristics
- Polished exhaust tailpipes

2470 ME 7.8 Motronic control unit (DME)

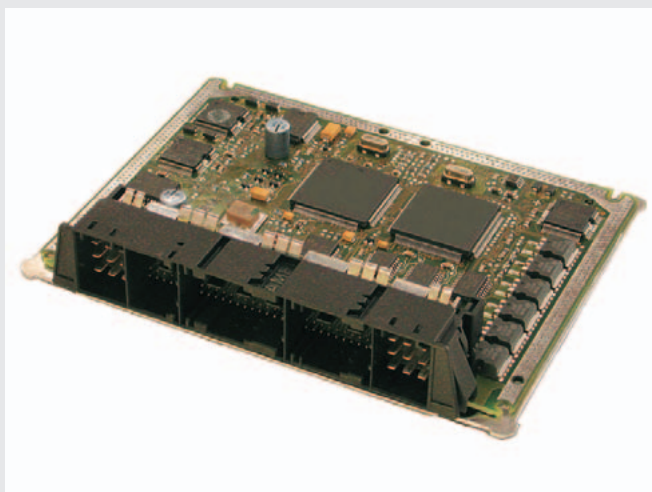
The following data records with modified maps are available for programming the Motronic control unit, which are adapted to the modifications of the mechanical components.

X51, EU2 (manual gearbox)

X51, EU3 (manual gearbox)

X51, EU3 Japan (manual gearbox) MY 03->

X51, OBD II/LEV (manual gearbox)



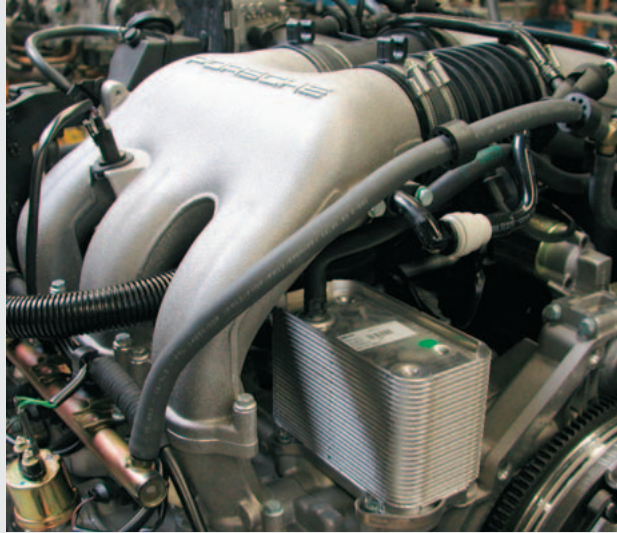
2_11_01

Contents

General	11
ME 7.8 Motronic control unit	11
Intake air manifold	12
Intake manifold pipes	12
Sucking jet pump	12
Exhaust manifold	13
Exhaust tailpipes	13

2446 Intake air manifold

The cross section of the sand-cast aluminum intake air manifold is modified to adapt to the increased air demand of the engine.



2_32_04

2447 Intake manifold pipes

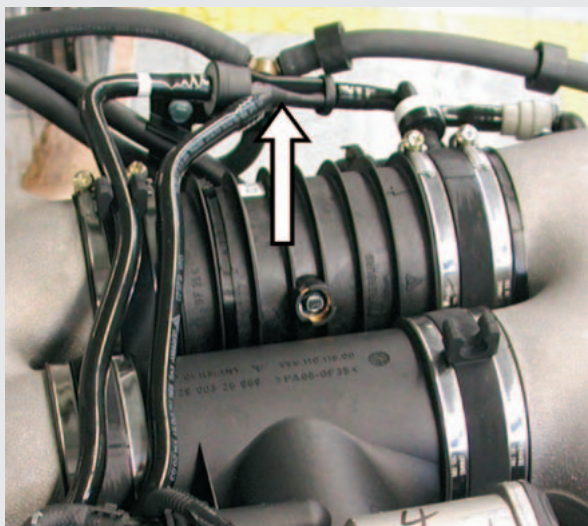
The special intake manifold pipes are adapted to the enlarged inlet ports in the cylinder head (1.5 mm larger diameter) and the modified intake air manifold, thereby achieving optimum induction.



2_33_04

4760 Sucking jet pump

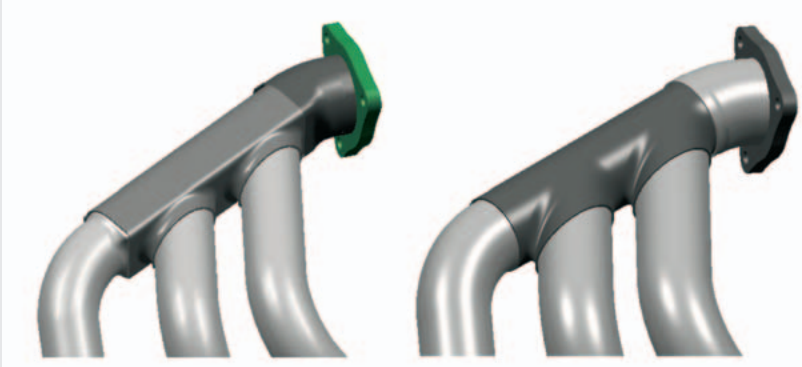
On this increased power engine, the pressure ratios in the intake system are changed by the optimized induction. For this reason, a sucking jet pump is also fitted in conjunction with the manual gearbox.



2_34_04

2610 Exhaust manifold

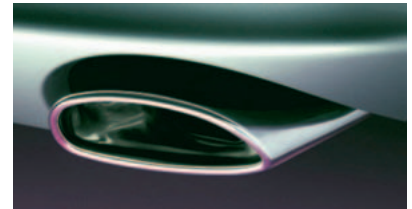
The exhaust manifold has larger cross sections than the standard exhaust manifold, which optimizes the flow characteristics of the exhaust gas and lowers the exhaust back pressure. The picture on the right shows the exhaust manifold of the increased power engine with 48 mm pipe diameter, on the left the standard exhaust manifold with 42 mm



2_35_04

2634 Exhaust tailpipes

The polished exhaust tailpipes of the special model have a ground surface look.



2_36_04